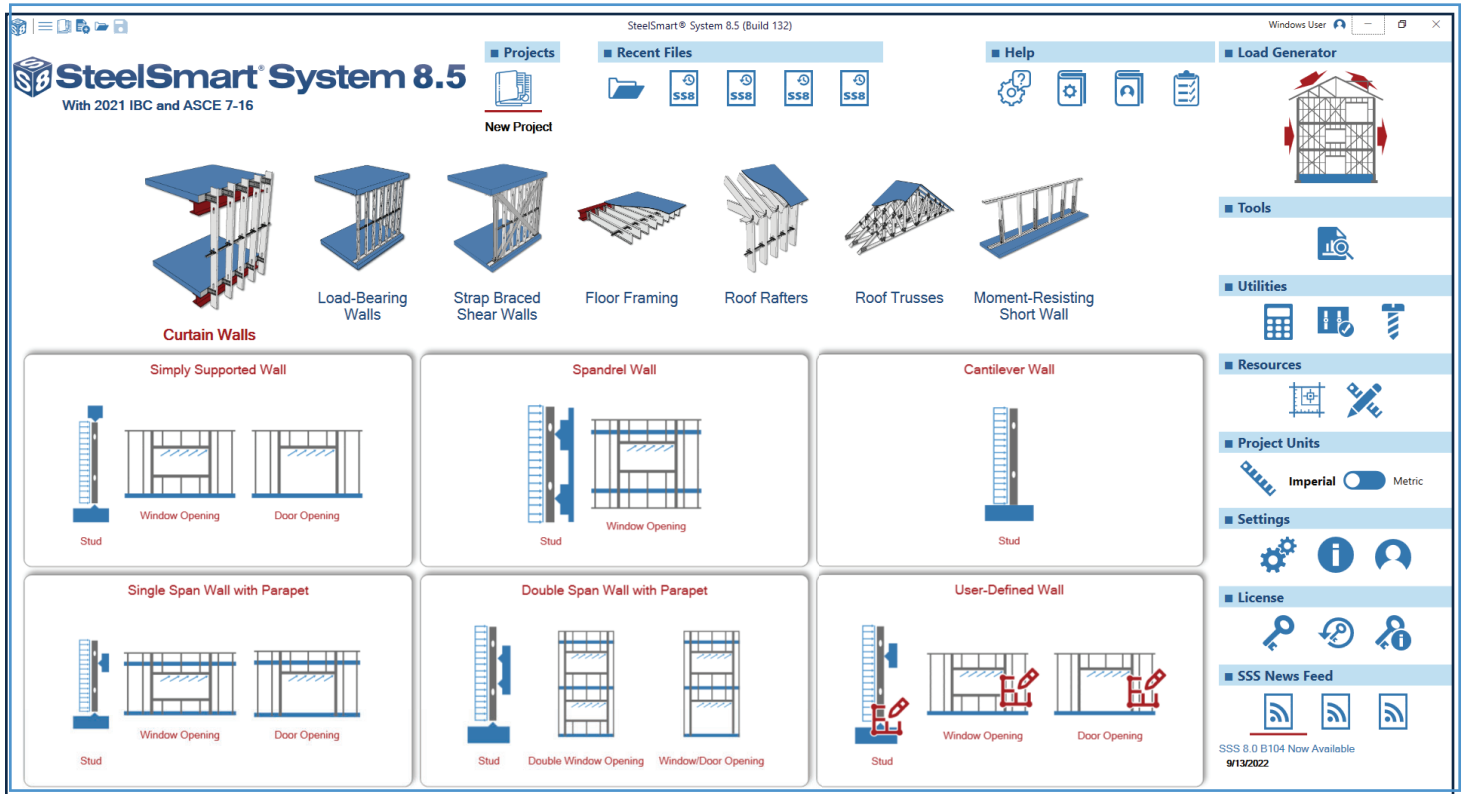
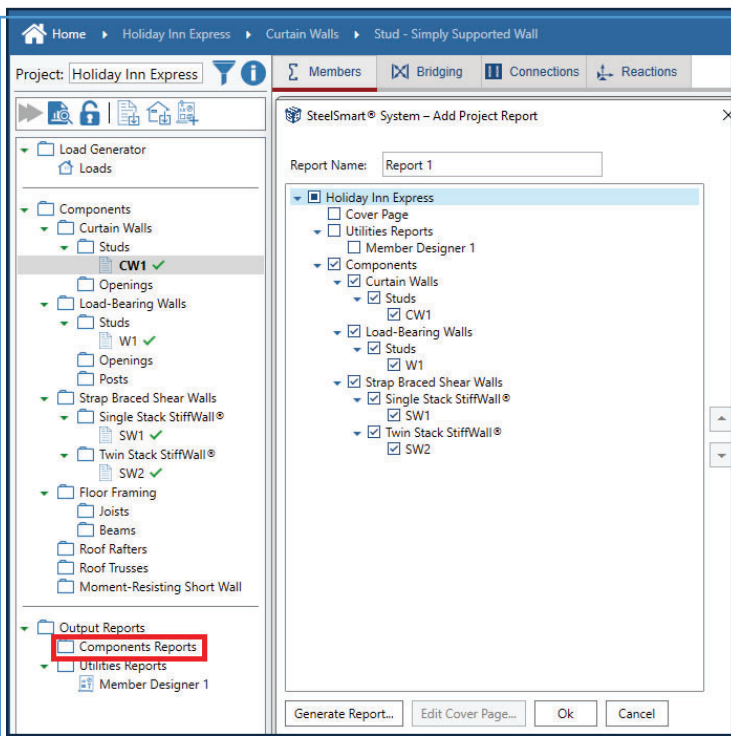


WHAT IS NEW



INTRODUCING SSS PROJECT WITH THE FOLLOWING FEATURES:



- Adding/Removing/Importing different components to project.
- Creating/Removing/Importing different building data to project.
- Adding aggregated components report and utilities reports to project.
- Enhanced reports to include a cover page, where three different templates are available.
- User preference data that is applied on new created components in project.
- Batch solving of components.
- Saving of project in one folder.
- Project information data enhancement where a project logo can be attached.
- Enhanced GUI navigation and state preserving in input and output.
- Updated User guide, technical reference and verification samples.

SteelSmart® is a registered trademark of Applied Science International, LLC. All other brand, product, service & feature names or trademarks are the property of their respective owners.

