

SteelSmart® System 8.0

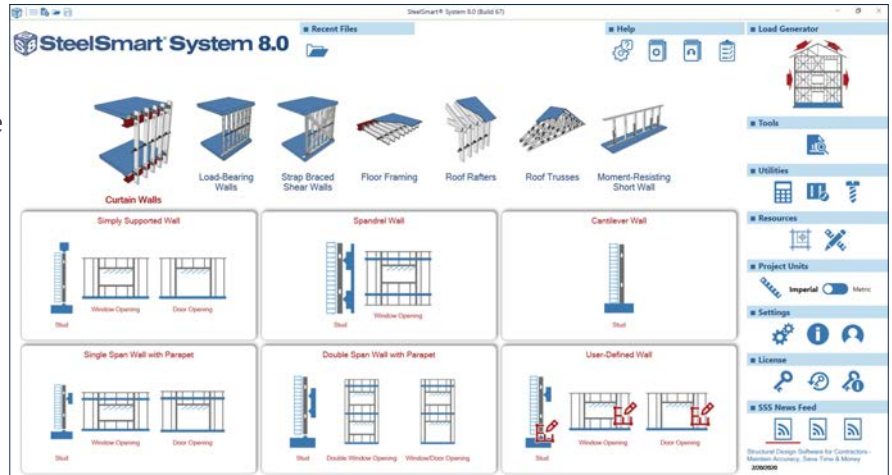
ASI's SteelSmart System was developed exclusively for The Steel Network, Inc. (TSN) to provide structural engineers with a structural design software tool engineered for optimal design and detailing of light steel framing studs, joists, shear walls, and connectors.

COMPLETE CFS DESIGN SUITE

Available as a complete suite, SteelSmart software will streamline light steel framing design and shop drawing production through the design and detailing of members, connections, and fasteners.

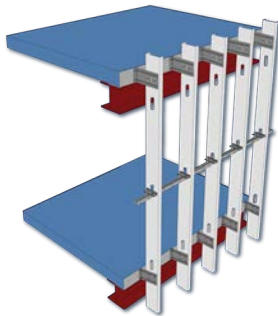
The following design software modules are available:

- SteelSmart System (SSS) Basic
- SteelSmart System (SSS) SSS Advanced
- SteelSmart Framing (SSF) Plugin for Revit



SSS BASIC FEATURES

With SteelSmart System Basic, you will be able to design with the following design modules, plus take advantage of the section properties calculator, clip selector, screw connection design, and CUFSM design modules.



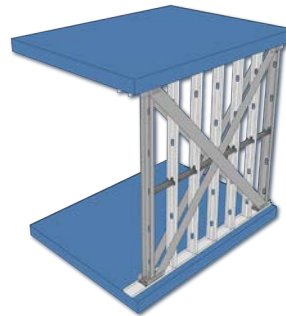
CURTAIN WALLS

Wind-bearing wall studs, window/door openings, & spandrel framing for multiple levels



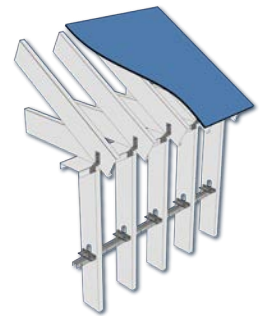
LOAD-BEARING WALLS

Gravity/wind-bearing wall studs, load bearing window/door openings, posts, & custom bearing walls up to 15 stories



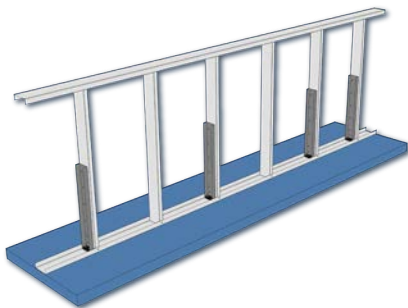
STRAP BRACED SHEAR WALLS

TSN's innovative StiffWall shear wall system, single stack & twin stack, multiple floor levels



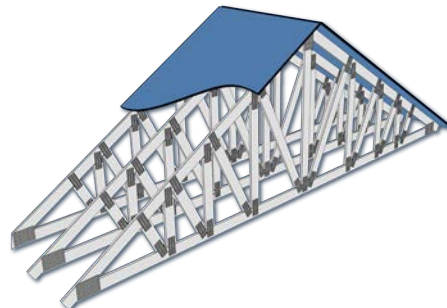
ROOF RAFTERS

5 standard rafters with single & multiple spans or custom roof layouts



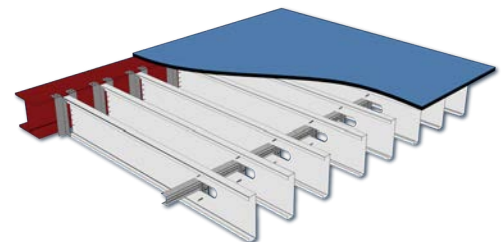
MOMENT-RESISTING SHORT WALL

Interior half walls, strip window framing, & parapet framing



ROOF TRUSSES

9 standard, custom roof truss layouts, or import truss layout from CAD file



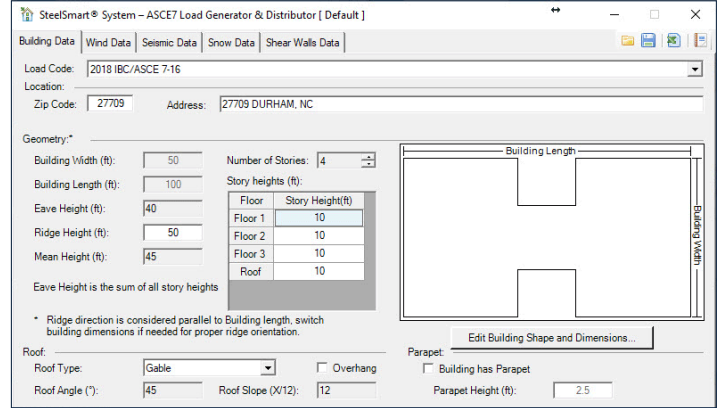
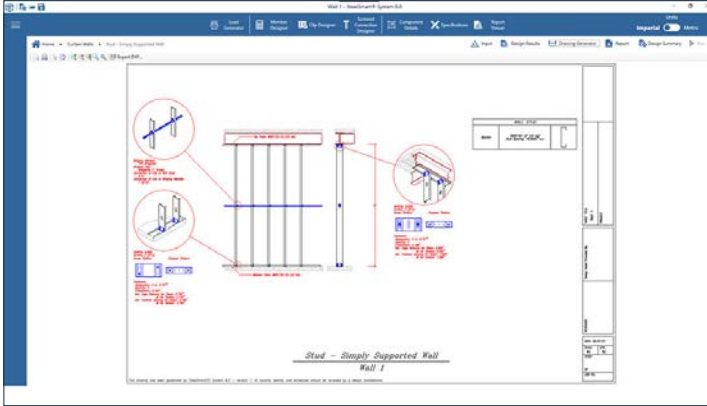
FLOOR FRAMING

8 standard or custom joist & beam layouts

SB SteelSmart® System 8.0

SSS ADVANCED FEATURES

SSS Advanced includes all design modules included with SSS Basic (Curtain Wall, Loadbearing Wall, X-Brace Shear Wall, Floor Framing, Roof Framing, Roof Truss, and Moment-Resisting Short Wall), plus the added benefits of the Layout and Connection Details Generator and the Lateral Load Generator/Distributor to complete the design process!



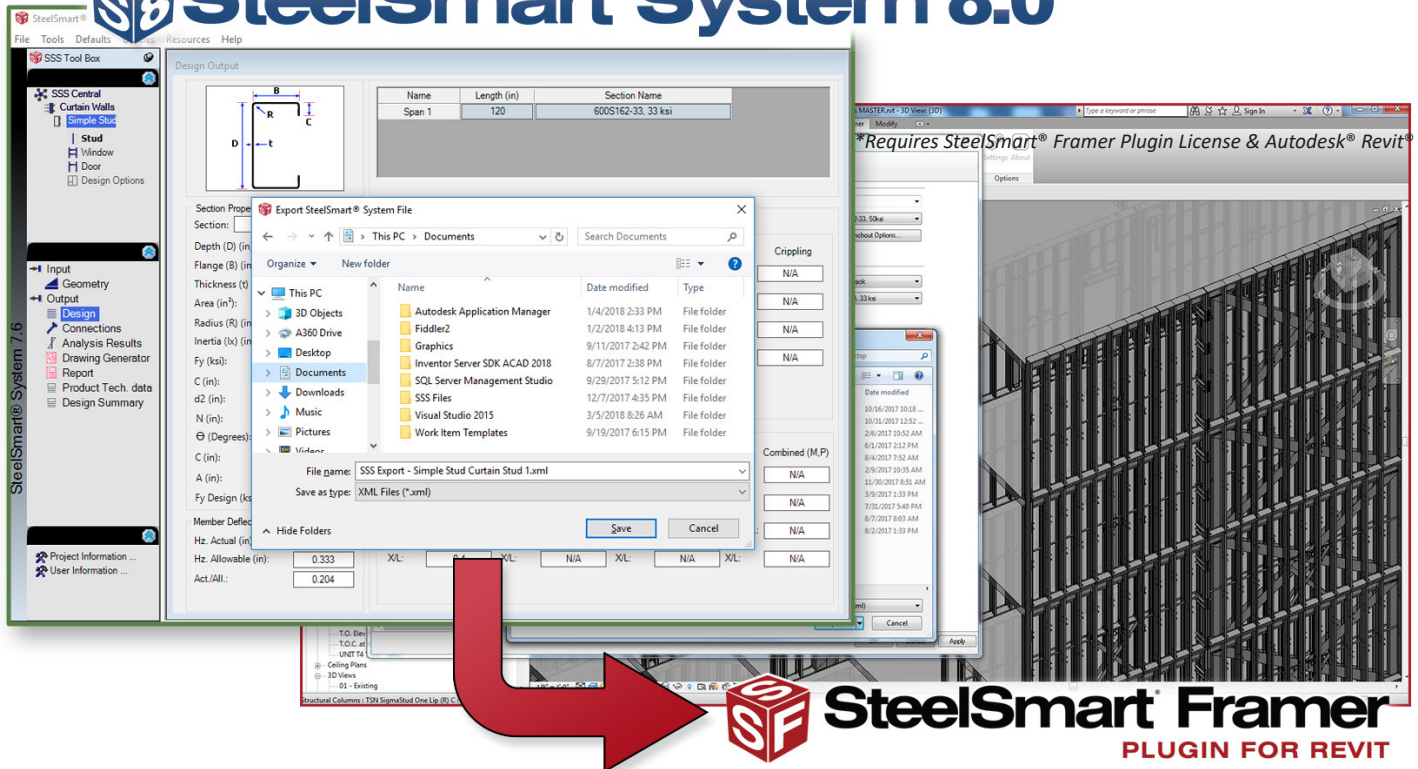
Layout & Details Generator – Simplify drawing creation by exporting designed layouts and connection details for your design into CAD / DXF format

Lateral Load Generator/Distributor – Automatically generate lateral wind, seismic, and snow load calculations based on zip code and transfer results to the X-Brace Shear Wall Module

CONNECTIVITY TO STEELSMART FRAMER

Connectivity to SteelSmart® Framers (SSF) Plug-in for Autodesk® Revit®: Added Export feature for all SteelSmart® System (SSS) wall modules so structural designs completed in SSS can be imported into SSF Styles for use in creating 3-D BIM models in Revit®.

SB SteelSmart® System 8.0



SteelSmart® is a registered trademark of Applied Science International, LLC. Autodesk® & Revit® are registered trademarks of Autodesk, Inc. StiffClip®, VertiClip® & DriftTrak® are registered trademarks of The Steel Network, Inc. All other brand, product, service & feature names or trademarks are the property of their respective owners.