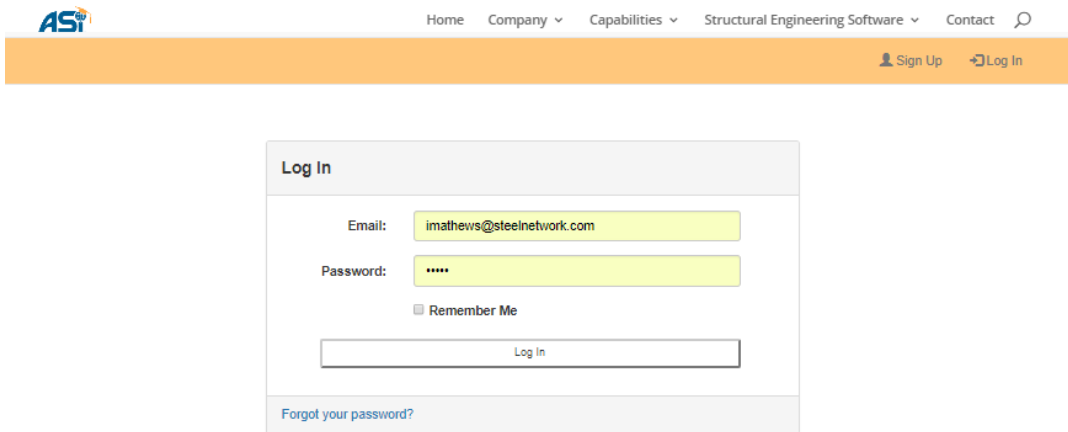


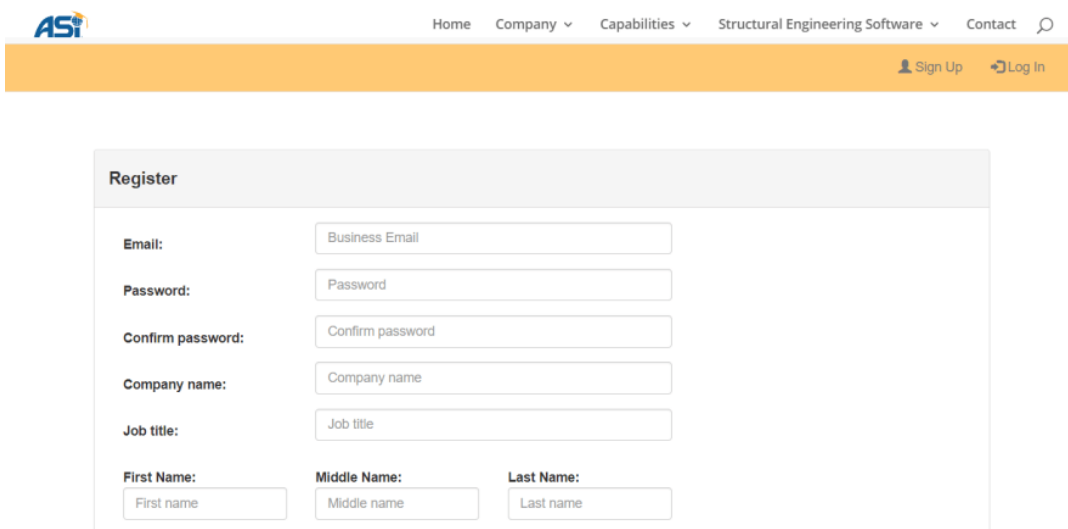
Step 1 - Login or Create an Account at the ASI Portal:

Login: <https://portal.appliedscienceint.com/Account/Login>



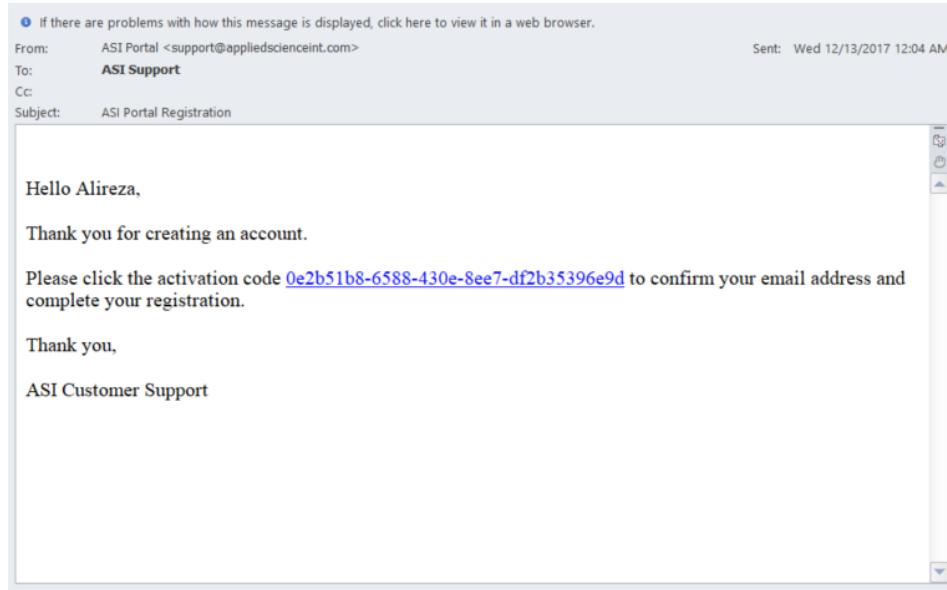
The screenshot shows the ASI Portal login interface. At the top, there is a navigation bar with the ASI logo on the left and links for Home, Company, Capabilities, Structural Engineering Software, and Contact on the right. Below the navigation bar is an orange header with 'Sign Up' and 'Log In' buttons. The main content area features a 'Log In' form with the following fields: Email (containing 'imathevs@steinetwork.com'), Password (masked with '****'), and a 'Remember Me' checkbox. A 'Log In' button is positioned below the password field. At the bottom of the form, there is a link for 'Forgot your password?'.

Create Account: <https://portal.appliedscienceint.com/Account/Register>



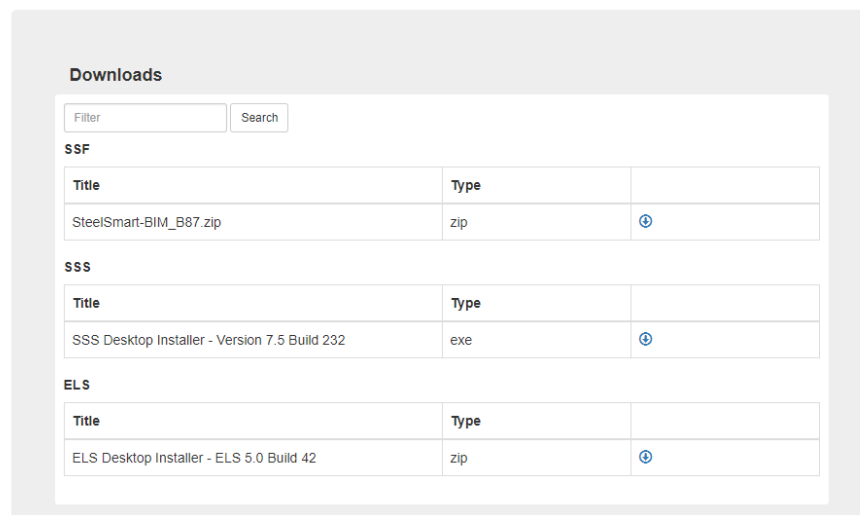
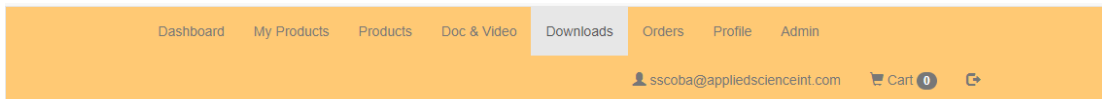
The screenshot shows the ASI Portal registration interface. At the top, there is a navigation bar with the ASI logo on the left and links for Home, Company, Capabilities, Structural Engineering Software, and Contact on the right. Below the navigation bar is an orange header with 'Sign Up' and 'Log In' buttons. The main content area features a 'Register' form with the following fields: Email (with a placeholder 'Business Email'), Password, Confirm password, Company name, Job title, and three separate fields for First Name, Middle Name, and Last Name.

Activate Account: Check your Email for Activation Link from support@appliedscienceint.com and Follow Instructions



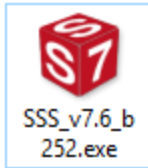
Step 2 – Navigate to “Downloads” Tab and Download Desired Software

The installer will be located on the Download Tab. Once you’ve downloaded the installer, navigate to where you downloaded it to and unzip the download. Note: You will only see the download if you have an active subscription for the software. If your subscription has expired, renew your subscription through your account on the ASI Portal or contact your ASI Sales Representative.

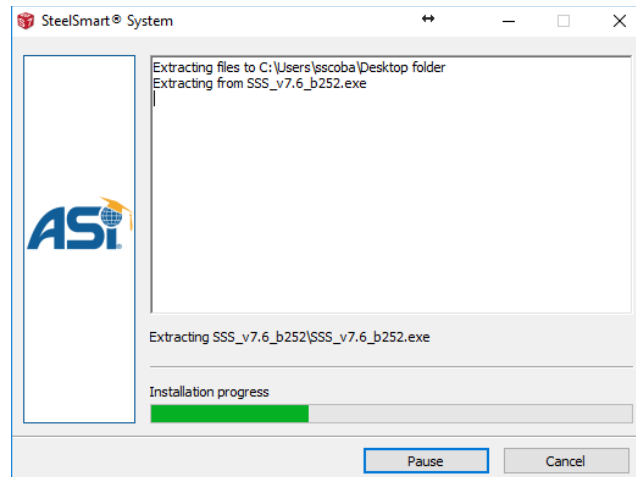
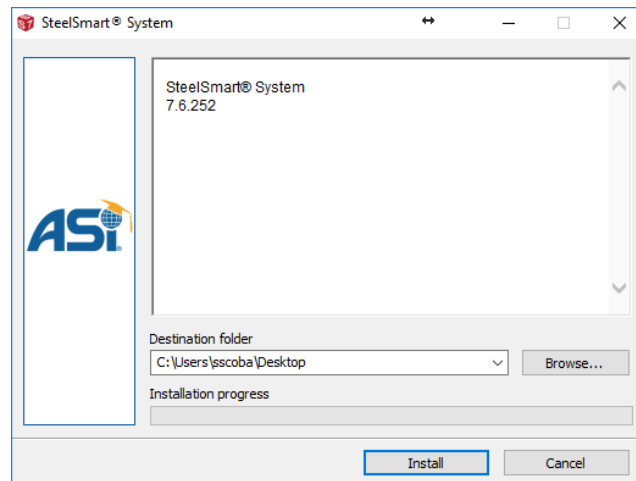


Step 3 - Begin Installation:

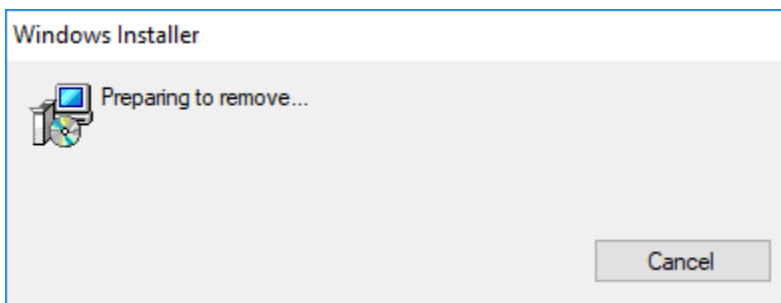
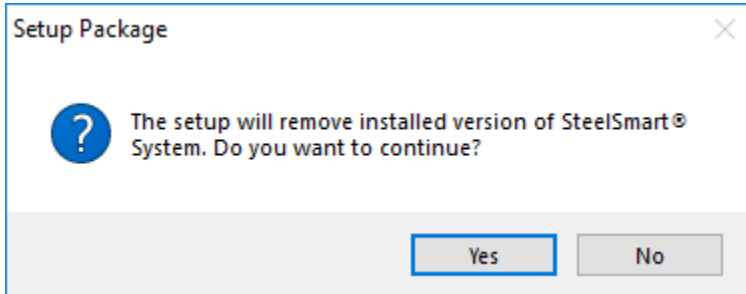
1. Run the SteelSmart System EXE installer:



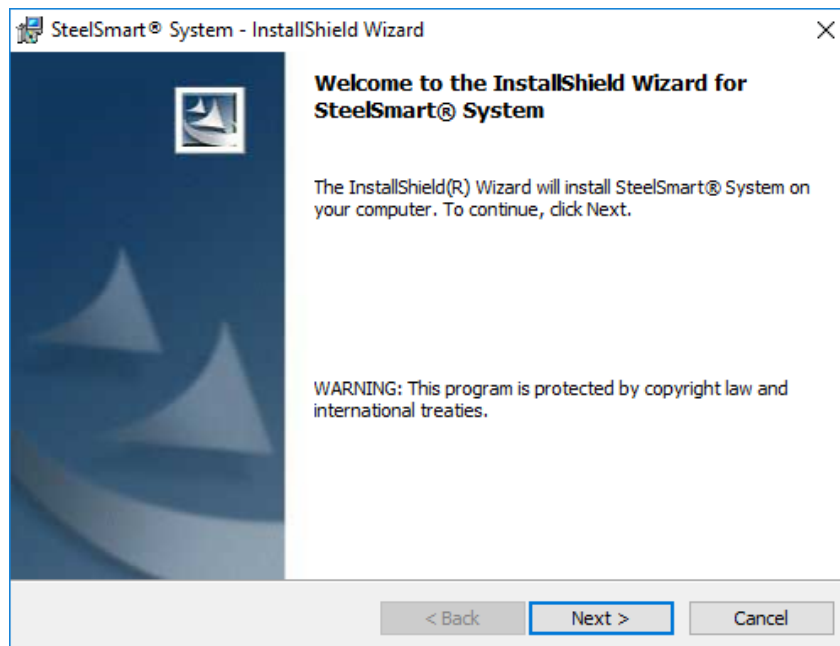
2. The installer will first extract the required files



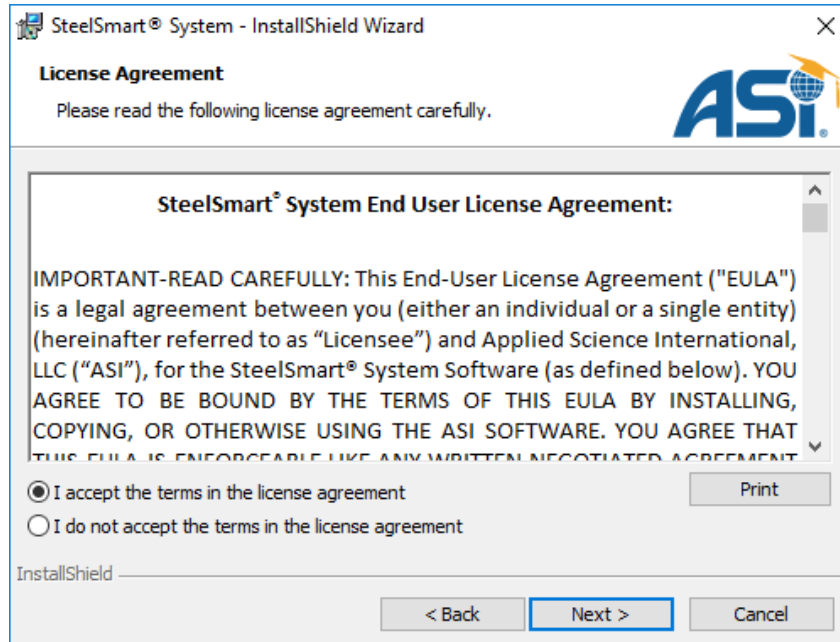
3. If you have a previous version of SSS installed, it will ask you if you want to remove it, select yes.



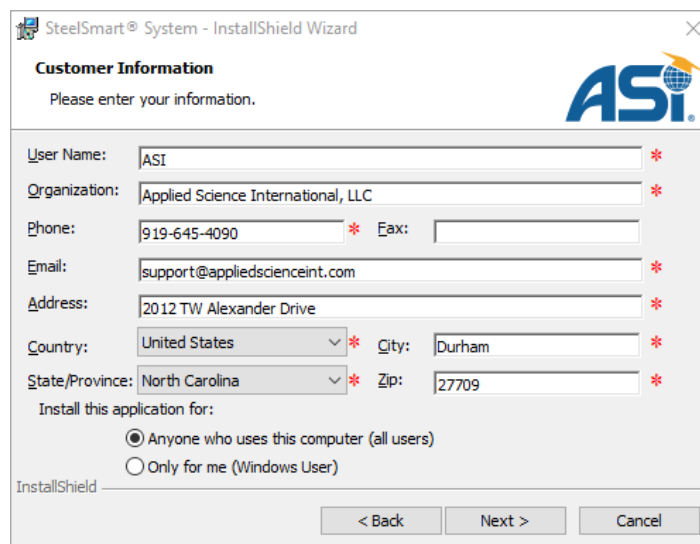
4. Once the installer is extracted, you will see the Install Shield Wizard below, click Next:



5. Review and accept the End User License Agreement:



6. When prompted, enter your company information and the email address of the main software user and select Next.

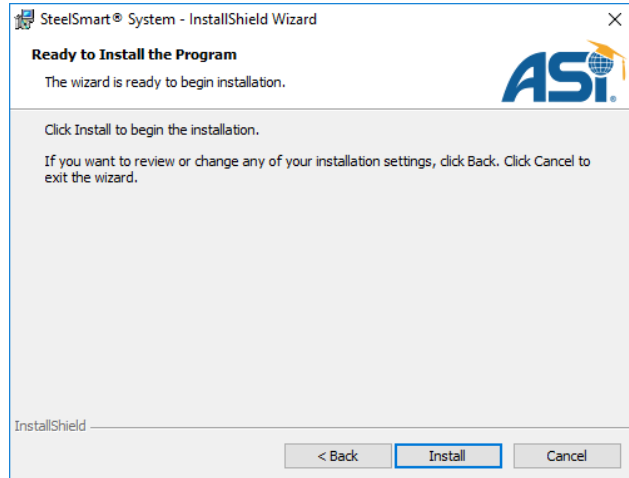
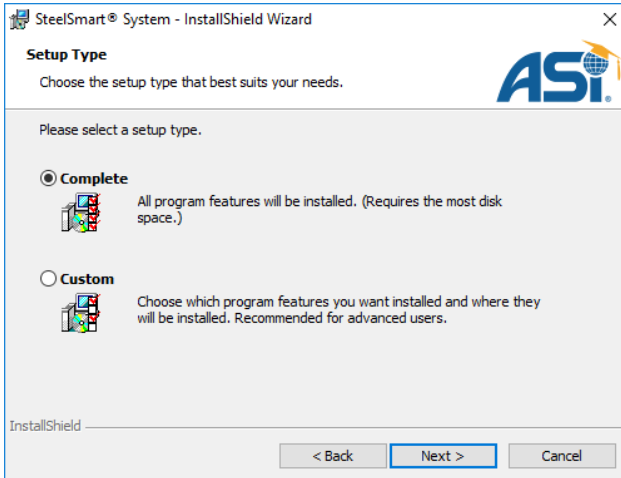


SteelSmart® System – Cold Formed Steel Design Software

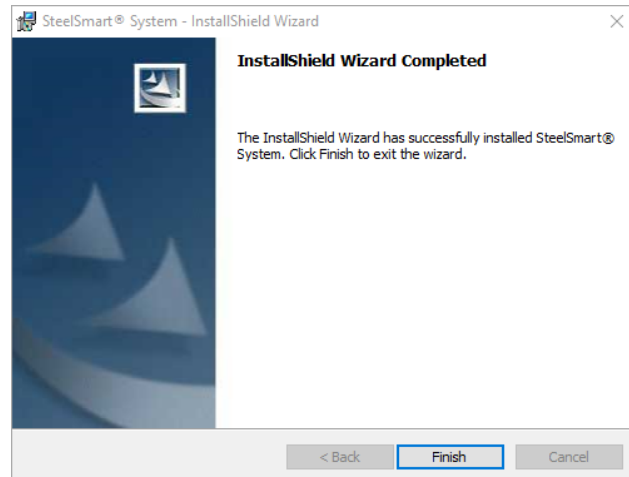
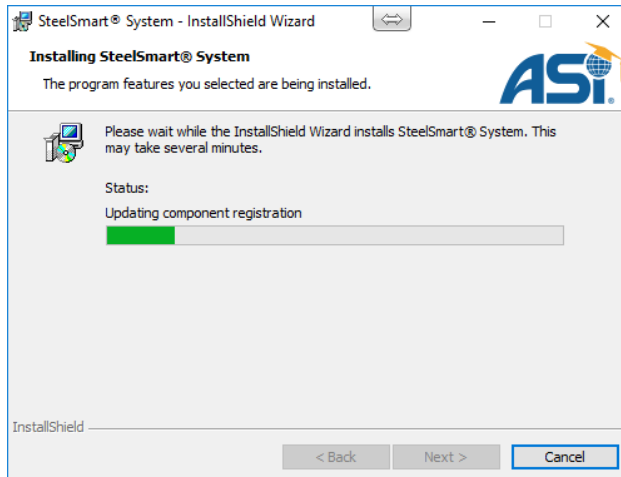
Download & Installation Instructions



7. Choose Complete Installation, then Next, then Install.



8. Once the Installation is complete, click Finish.

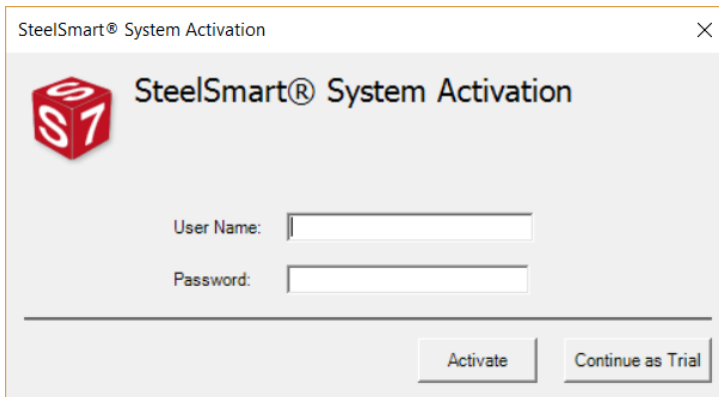


Step 4 - Activate SteelSmart System License

1. Locate and Open the SteelSmart System from your Desktop.

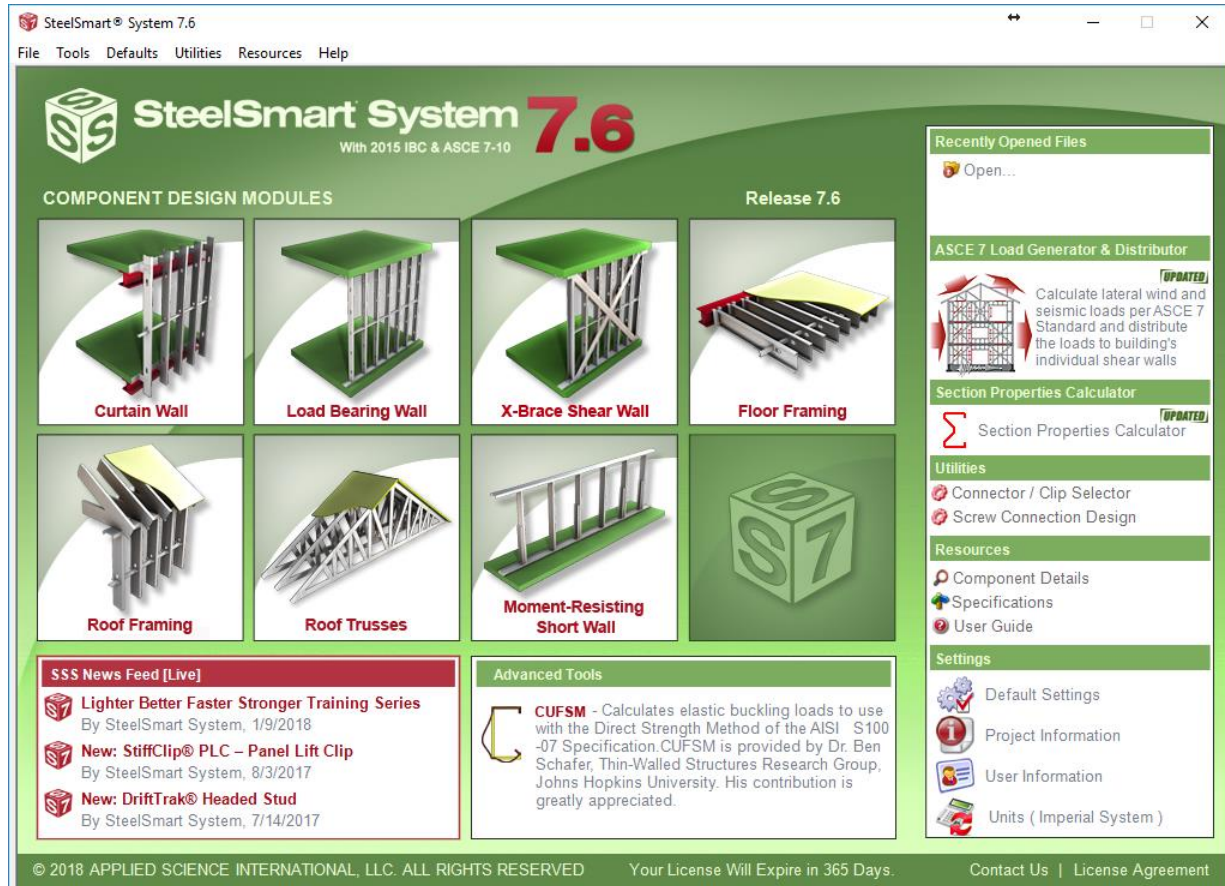


2. You will be prompted with the screen below. The User Name and Password are your ASI Portal credentials (this is the same login you would use to log in to your account at <https://portal.appliedscienceint.com>, you can also choose “forgotten password” from the ASI Portal link if you do not know your password). Click activate to active your license purchase, or you can choose to proceed with a 2-week trial.



3. When click “Activate” and it will automatically pull your license from your account.

Step 5 - Start Designing!



SteelSmart® System 7.6

File Tools Defaults Utilities Resources Help

SteelSmart System 7.6
With 2015 IBC & ASCE 7-10

COMPONENT DESIGN MODULES

Release 7.6

Curtain Wall Load Bearing Wall X-Brace Shear Wall Floor Framing

Roof Framing Roof Trusses Moment-Resisting Short Wall

SSS News Feed [Live]

- Lighter Better Faster Stronger Training Series**
By SteelSmart System, 1/9/2018
- New: StiffClip® PLC – Panel Lift Clip**
By SteelSmart System, 8/3/2017
- New: DriftTrak® Headed Stud**
By SteelSmart System, 7/14/2017

Advanced Tools

CUFSM - Calculates elastic buckling loads to use with the Direct Strength Method of the AISI S100 -07 Specification. CUFSM is provided by Dr. Ben Schafer, Thin-Walled Structures Research Group, Johns Hopkins University. His contribution is greatly appreciated.

Recently Opened Files

Open...

ASCE 7 Load Generator & Distributor

[UPDATED]
Calculate lateral wind and seismic loads per ASCE 7 Standard and distribute the loads to building's individual shear walls

Section Properties Calculator

[UPDATED]
Section Properties Calculator

Utilities

- Connector / Clip Selector
- Screw Connection Design

Resources

- Component Details
- Specifications
- User Guide

Settings

- Default Settings
- Project Information
- User Information
- Units (Imperial System)

© 2018 APPLIED SCIENCE INTERNATIONAL, LLC. ALL RIGHTS RESERVED Your License Will Expire in 365 Days. Contact Us | License Agreement

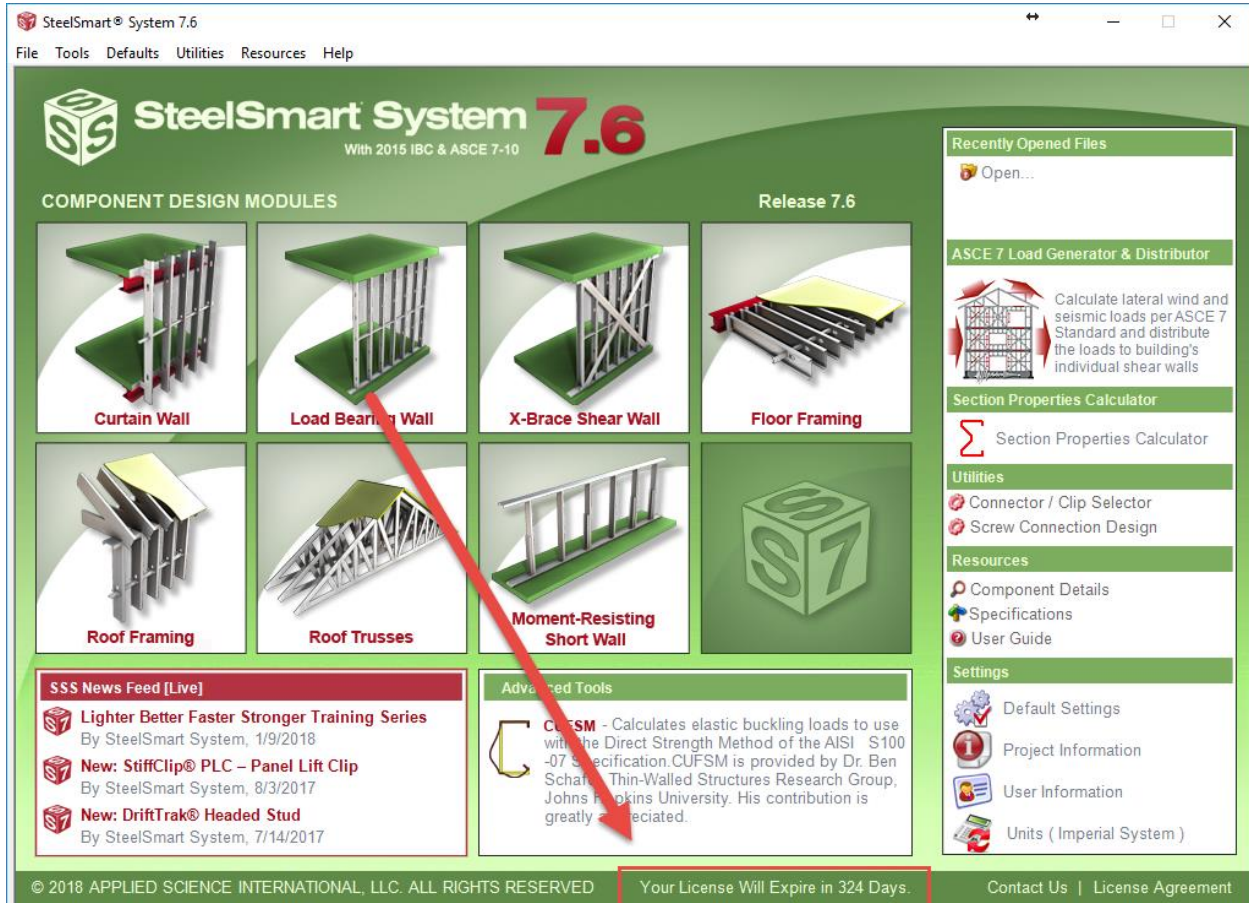
SteelSmart® System – Cold Formed Steel Design Software



Download & Installation Instructions

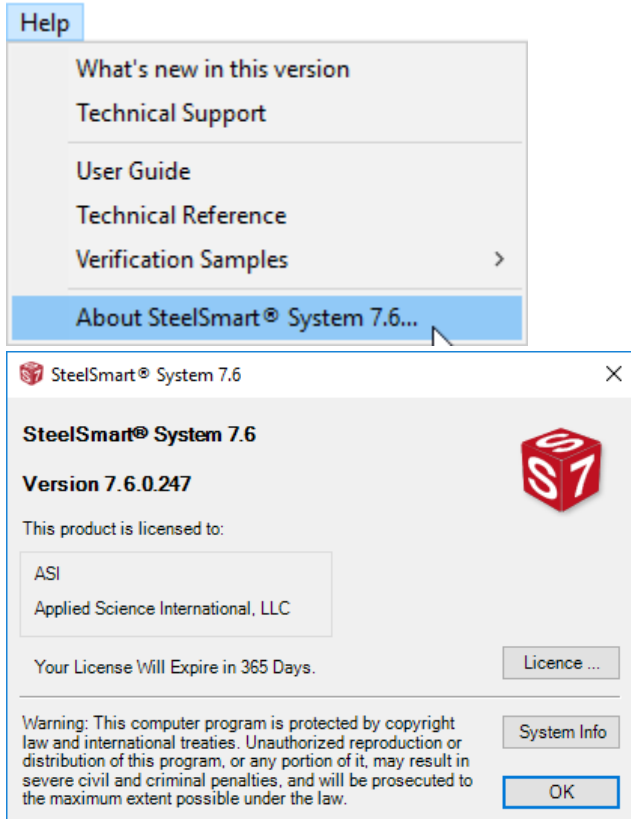
Checking Your License:

You can check the remaining duration on your license by opening SteelSmart System and looking the bottom of the main screen.



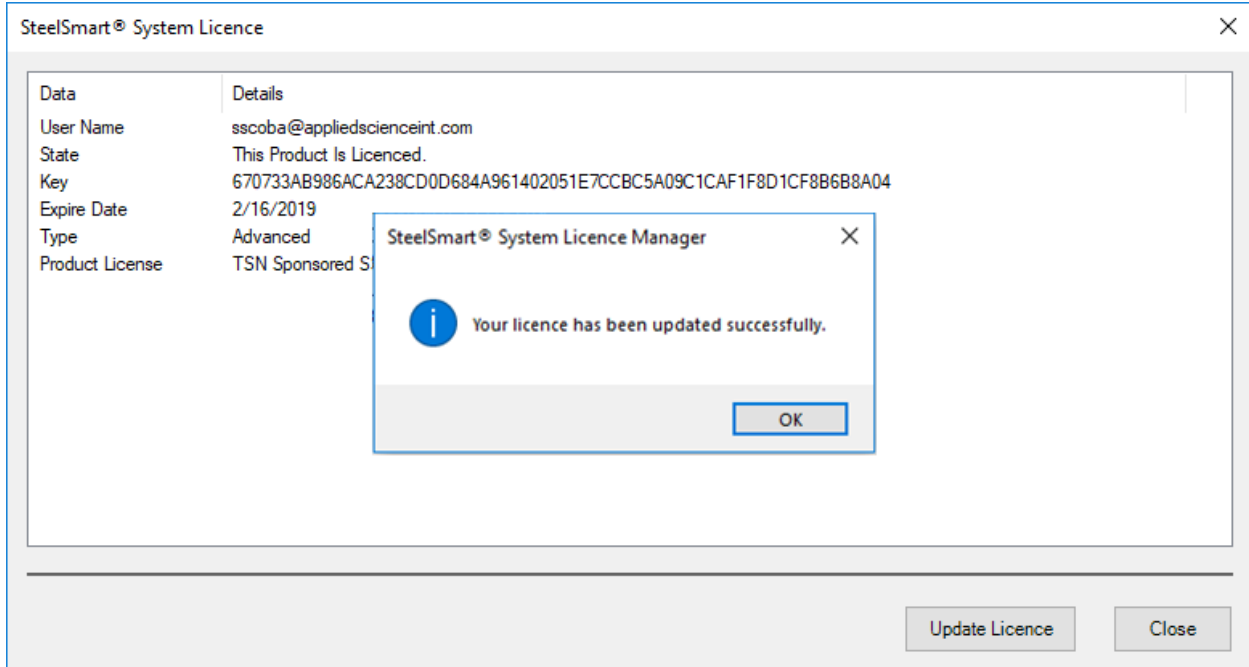
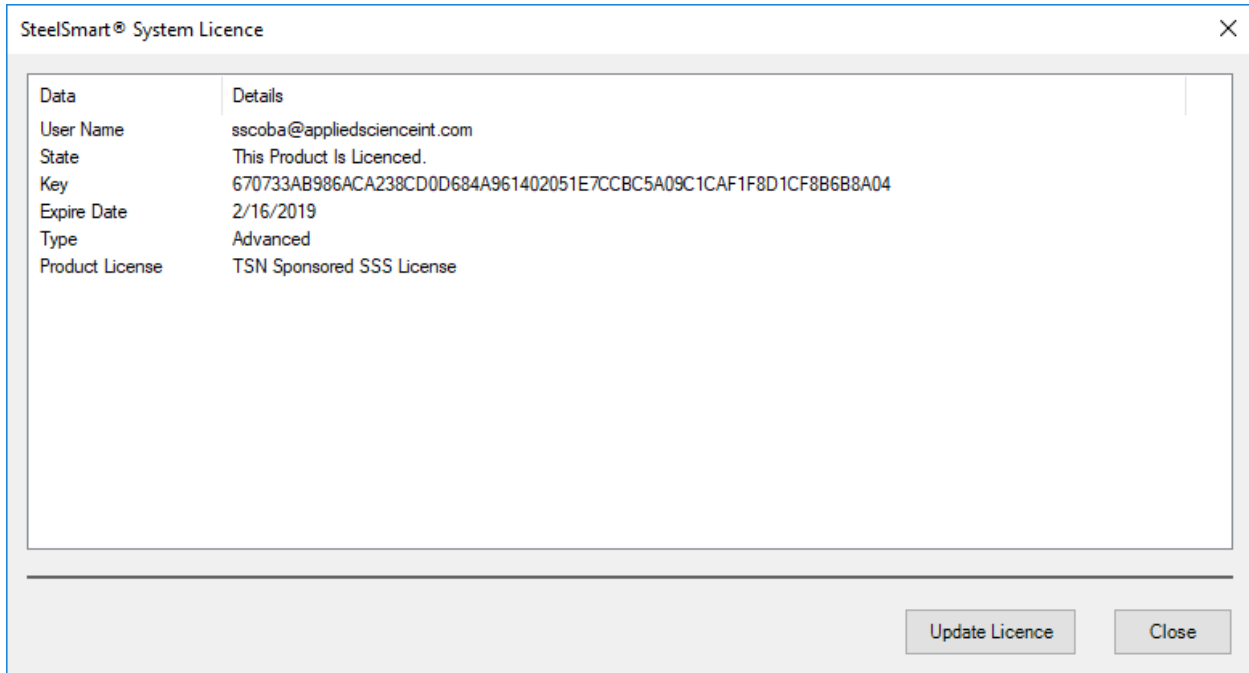
Updating Your License after Renewal:

You can update your license by opening SteelSmart System from the Help Menu select About SteelSmart System 7.6, then License.



SteelSmart® System – Cold Formed Steel Design Software

Download & Installation Instructions



Deactivating Your License:



SteelSmart® System – Cold Formed Steel Design Software

Download & Installation Instructions



You can deactivate your license by logging into your ASI Portal Account at <https://portal.appliedsciencet.com> to view your Active Licenses. Use the delete button to deactivate a license or View Log to view error codes.

Active Licenses used

Product Line	License	Expires	IP	Machine Name	Actions
TSN Sponsored SSS License	Advanced	16/2/2019	10.33.6.50	TSND-AD-WK20	 

[View all log](#)