



steel smart system® 5.0

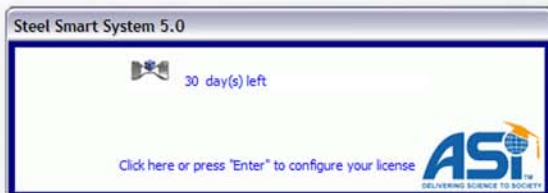
Installation

*** IMPORTANT – Use the “Add or Remove Programs” Control Panel to remove any currently installed versions of Steel Smart System®. This will not delete any saved projects files and version 5.0 is backwards compatible.

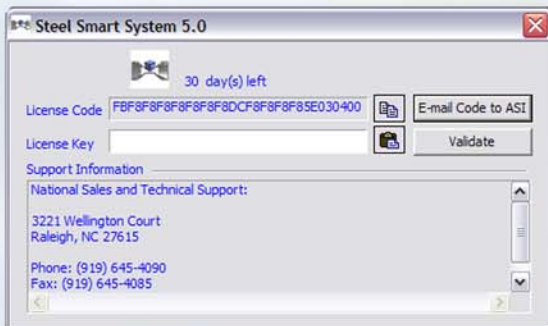
- 1 – Insert the Steel Smart System® 5.0 CD into your CD Rom drive.
- 2 – Follow the Installation Wizard’s instructions to install SSS 5.0 to your computer.

To register your software for a **FREE** extended license

- 1 – Double-click on the SSS icon to run the program. When this screen appears press Enter



- 2 – Click on the “E-mail Code to ASI” button to receive your License Key



- 3 – When you receive the email containing the SSS license key, copy and paste it into the window and click the “Validate” button.

**Complimentary
Copy**

Minimum System Requirements

- Processor: 233 Intel® Pentium® MMX (500MHz Pentium III recommended)
- Operating System: Windows® 2000, Windows® XP Professional, Windows® XP Home Edition, Windows® Vista Ultimate
- Memory: 64MB (128MB recommended)
- Hard Disk: 350MB minimum free disk space (500MB recommended)
- Video: 4MB Accelerated Graphics Adaptor (8MB supporting OpenGL technology recommended)
- Browser: Internet Explorer 5 or higher
- Screen Resolution: minimum 1024x768

Software Requirements

Windows 2000, XP, or Vista
Any software supporting CAD formats (.DFX & .DWG).

Contact ASI for technical support via email:

asi@appliedscienceint.com

